

Localisation of Rayleigh–Bloch waves and damping of resonant loads on arrays of vertical cylinders

Luke G. Bennetts^{1†}, Malte A. Peter^{2,3} and Fabien Montiel⁴

¹School of Mathematical Sciences, University of Adelaide, Adelaide, SA, Australia

²Institute of Mathematics, University of Augsburg, Augsburg, Germany

³Augsburg Centre for Innovative Technologies, University of Augsburg, Augsburg, Germany

⁴Department of Mathematics and Statistics, University of Otago, Dunedin, New Zealand

(Received ?; revised ?; accepted ?. - To be entered by editorial office)

Linear potential-flow theory is used to study loads imposed on finite line arrays of rigid, bottom-mounted, surface-piercing, vertical cylinders by surface water waves. Perturbations in the cylinder locations are shown to damp the resonant loads experienced by the unperturbed array. A relationship is established between the damping and the phenomenon of Anderson localisation. Specifically, the Rayleigh–Bloch waves responsible for the resonant loads are shown to attenuate along the array when perturbations are introduced, resulting in localisation when the attenuation rate is sufficiently large with respect to the array length. Further, an efficient solution method for line arrays is introduced that captures the Rayleigh–Bloch wave modes supported by unperturbed arrays from the scattering characteristics of an individual cylinder.

1. Introduction

Maniar & Newman (1997) studied hydrodynamic loads imposed by surface water waves on columns supporting, for example, bridges or floating airports, using a model based on linear potential-flow theory. They modelled the columns as a long, finite straight-line array of equally spaced, rigid, bottom-mounted, surface-piercing cylinders with identical circular cross-sections. Fig. 1 shows schematics of their model geometry, which this study uses as the basic, unperturbed problem. Spatial locations are defined by the Cartesian coordinate system (x, y, z) , where (x, y) defines locations in the infinite horizontal plane, and z is the vertical coordinate. The radius of the cylinders is denoted a , and the spacing between centres of adjacent cylinders is denoted d . The cylinders are aligned along the x -axis, and indexed $n = 1, \dots, N$ from left to right. The geometrical centres of the disks they occupy in the horizontal plane are denoted (x_n, y_n) for $n = 1, \dots, N$, where $x_n = x_1 + (n - 1)d$ and $y_n = 0$. Under the usual assumptions of linear water-wave/structure interaction theory (e.g. Linton & McIver 2001), and noting uniformity of the geometry in the vertical plane, the hydrodynamic loads for motions at a prescribed angular frequency, $\omega \in \mathbb{R}_+$, are defined in terms of the velocity potential $(g/i\omega)\phi(x, y) \cosh\{k(z + h)\} / \cosh(kh)$, where $g \approx 9.81 \text{ ms}^{-2}$ is the constant of gravitational acceleration, h denotes the equilibrium water depth, and the complex-valued function ϕ satisfies Helmholtz equation in the horizontal plane exterior to the cylinders with wave number $k(\omega) \in \mathbb{R}_+$, zero-normal-derivative conditions on the cylinder boundaries, and the Sommerfeld radiation condition in the far field.

† Email address for correspondence: luke.bennetts@adelaide.edu.au

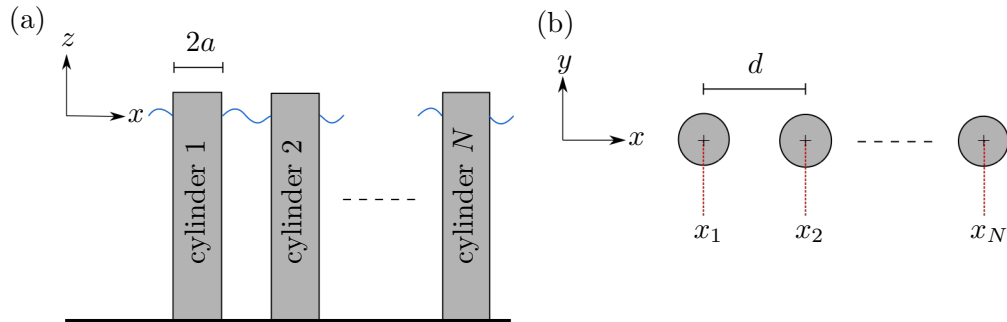


FIGURE 1. Schematics of the geometry considered by Maniar & Newman (1997) and others, providing the unperturbed geometry for this study: (a) cross-sectional side view; and (b) plan view.

Maniar & Newman (1997) found that cylinders within the array experience extreme, resonant loads at certain frequencies, with the strongest resonance imposing in-line loads (the load in the direction of the array) 35 times that of a cylinder in isolation, for cylinders in the middle of a 100-cylinder array. This occurred for a frequency just below the frequency at which a non-trivial solution exists for the related problem of a single cylinder in the centre of a channel with width equal to the cylinder spacing, and rigid walls on which the normal derivative of the potential vanishes (a Neumann trapped mode; see Callan *et al.* 1991). They showed a weaker resonance occurs at a frequency just below the frequency at which a non-trivial solution exists for the cognate channel problem in which the potential vanishes on the channel walls (a Dirichlet trapped mode; see Evans & Porter 1997). These trapped modes may be interpreted as solutions of the infinite-array problem, existing in the absence of ambient incident wave forcing. Maniar & Newman (1997) argued that, although the trapped-mode solutions do not exist for a finite array, for long arrays incident waves excite large responses almost identical to the trapped modes around these frequencies — a phenomenon known as near-trapping — explaining the resonant loads.

Evans & Porter (1999) established the Neumann trapped mode as the standing-wave limit of a so-called Rayleigh–Bloch wave — a trapped mode that propagates along an infinite array and decays exponentially away from it. For circular cylinders, Rayleigh–Bloch waves have been shown to exist for all values of cylinder radius and spacing, and all frequencies below the so-called cut-off, where the Rayleigh–Bloch wave becomes a Neumann trapped mode. Below the cut-off, the Rayleigh–Bloch wavelength is shorter than the wavelength in the surrounding open water, so that it unequivocally cannot radiate energy away from the array. In this regime, incident waves cannot excite a Rayleigh–Bloch wave on an infinite array, as the incident wave imposes a quasi-periodicity on the wave field that is incompatible with the quasi-periodicity of the Rayleigh–Bloch wave. However, incident waves can excite Rayleigh–Bloch waves on arrays with ends, for example, semi-infinite arrays, where a Rayleigh–Bloch wave is generated at the end and propagates along the array, or finite arrays, where Rayleigh–Bloch waves are generated at both ends, propagating in both directions along the array.

Evans & Porter (1999) found that matching the Rayleigh–Bloch wavelength to the length of the array provides a better approximation of the resonant (near-trapping) frequency for the long, finite array than the frequency of the Neumann trapped mode.

They showed that at this resonant frequency the wave-surface profile along the finite array almost exactly matches the profile of the Rayleigh–Bloch wave supported by the corresponding infinite array with an appropriately tuned amplitude, except in vicinities of the array ends. Further, they showed that for cylinder-radius-to-spacing ratios greater than ~ 0.41 , Rayleigh–Bloch waves exist that are antisymmetric with respect to the plane passing through the cylinder centres, in addition to the symmetric modes that exist for all ratios. Porter & Evans (1999) calculated Rayleigh–Bloch waves for non-circular cylinders numerically, and Linton & McIver (2002) proved Rayleigh–Bloch waves exist for cylinders of arbitrary cross-sectional shape.

Linton *et al.* (2007) and Peter & Meylan (2007) developed similar solution methods for semi-infinite arrays forced by plane incident waves, by expressing the wave field as a superposition of the field supported by the corresponding infinite array under the same forcing, a Rayleigh–Bloch wave propagating along the array (when operating beneath the cut-off), and a decaying, circular wave generated at the array end. Thompson *et al.* (2008) extended this approach to give an efficient approximation method for long, finite arrays, in which Rayleigh–Bloch waves propagate in both directions along the array, and circular waves are generated at both ends but are assumed to have decayed sufficiently by the time they reach the opposite end that their influence is negligible. They showed that resonance in the middle of the array is due to a combination of (i) strong excitation of Rayleigh–Bloch waves, (ii) strong reflection of Rayleigh–Bloch waves at the ends of the array, and (iii) constructive interference of Rayleigh–Bloch waves following multiple reflections, all of which are satisfied just below the cut-off.

Motivated by the findings of Maniar & Newman (1997) and others, Kagemoto *et al.* (2002) used laboratory wave-tank experiments to study the wave field along an array of 50 identical, evenly-spaced cylinders with radius and spacing on the order 0.1 m, forced by plane waves at head-on incidence, and focussing on frequencies around the Neumann trapped mode. Measurements of free-surface elevations along the array were analysed, as proxies for the loads on the cylinders. They showed that the resonance is significantly smaller than the theoretical prediction and occurs towards the front of the array rather than in the middle. They attributed this to viscous dissipation on the cylinder surfaces, acknowledging that viscous effects would be far weaker at field scales.

Rayleigh–Bloch waves exist in other branches of wave science, where they are sometimes known as edge, guided, surface or bound waves. Colquitt *et al.* (2015) recently developed low- and high-frequency homogenisation theories to calculate Rayleigh–Bloch waves in an elastic medium with an infinite array of voids. Their Introduction provides an up-to-date review of Rayleigh–Bloch waves in different phenomena.

The present study concerns the impacts of perturbing the cylinder locations from their regular arrangement on the excitation of resonant loads, with Fig. 2 acting as catalyst. It shows the frequency dependence of the normalised maximum in-line load

$$\max_{n=1,\dots,N} |F_n| \quad \text{where} \quad F_n = \frac{\tanh(ka)}{ka} \int_{-\pi}^{\pi} \phi(x_n + a \cos \vartheta, y_n + a \sin \vartheta) \cos(\vartheta) \, d\vartheta \quad (1.1)$$

on 100-cylinder arrays, caused by an ambient incident plane wave with potential

$$\phi_{\text{am}} = A\varphi \quad \text{where} \quad \varphi(x, y : \psi_{\text{am}}) = e^{ik(x \cos \psi_{\text{am}} + y \sin \psi_{\text{am}})} \quad (1.2)$$

and A is a constant amplitude, at head-on incidence $\psi_{\text{am}} = 0$. Results are shown for the unperturbed array, with $a/d = 0.25$ as in Fig. 2 of Maniar & Newman (1997), and perturbed arrays in which the perturbations are chosen randomly from uniform distributions, with the perturbation strength (later denoted ε) being half the magnitude of the maximum perturbation relative to the cylinder spacing. Results shown for the

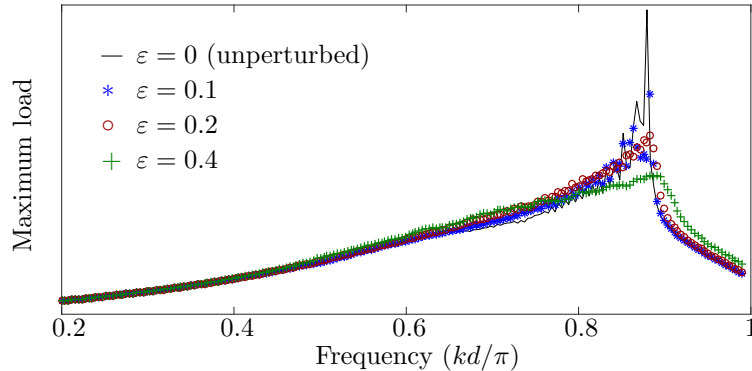


FIGURE 2. Maximum normalised in-line load on a 100-cylinder array produced by a plane incident wave at head-on incidence, with cylinder-radius-to-spacing ratio $a/d = 0.25$, for an unperturbed array ($\varepsilon = 0$, $-$), and the means of ensembles of 100 randomly generated realisations of perturbed arrays, using perturbation strengths $\varepsilon = 0.1$ ($*$), $\varepsilon = 0.2$ (\circ), and $\varepsilon = 0.4$ ($+$).

perturbed arrays are means of 100 randomly generated realisations of the array. The results are for illustrative purposes only and the values of the loads on the linearly-scaled ordinate axis are omitted accordingly.

The loads for the unperturbed array display the resonance associated with the Neumann trapped mode, around $kd/\pi \approx 0.88535$, as identified by Maniar & Newman (1997) and others. (No attempt has been made to sample the frequency range in order to capture the resonance exactly.) The series of maxima and minima leading up to the resonance is a consequence of resonant and antiresonant interactions between the rightward- and leftward-propagating Rayleigh–Bloch waves, which can be deduced from Thompson *et al.* (2008)’s Eqns. (33) and (41). The frequency range shown extends just beyond the cut-off at frequency $kd/\pi \approx 0.88574$, omitting the weaker resonance associated with the Dirichlet trapped mode. The focus of this investigation will be on frequencies around the strongest resonance, as in Evans & Porter (1999), Thompson *et al.* (2008) and others. Perturbations significantly damp this resonance, with the damping increasing as the perturbation strength increases. Maximum loads away from the resonance are relatively unaffected by perturbations.

In many other situations involving wave propagation through some medium, random perturbations in the medium suppress wave propagation, spatially localising wave energy to a vicinity of their source — a phenomenon known as Anderson localisation (see the book by Sheng 2006). Localisation can be identified as exponential attenuation of the wave through the medium, for which, in the absence of perturbations, the wave would propagate without loss of intensity. It has been discovered, mainly theoretically but also experimentally, for classical waves in many contexts, including structural acoustics (Hodges & Woodhouse 1983), ultrasonics (Weaver 1990) and optics (Berry & Klein 1997).

Here, random perturbations in the locations of cylinders in the line array are shown to localise Rayleigh–Bloch waves, within the framework of linear potential-flow theory, leading to the damping of resonant loads observed in Fig. 2. To the authors’ knowledge, localisation of Rayleigh–Bloch modes has not been investigated in any context previously. As part of the study, a solution method is developed for line arrays that identifies Rayleigh–Bloch wave modes supported by unperturbed arrays from the scattering characteristics of individual cylinders, without evaluating slowly convergent Schlömilch series, as necessitated by standard interaction theory (e.g. Evans & Porter 1997). The method is

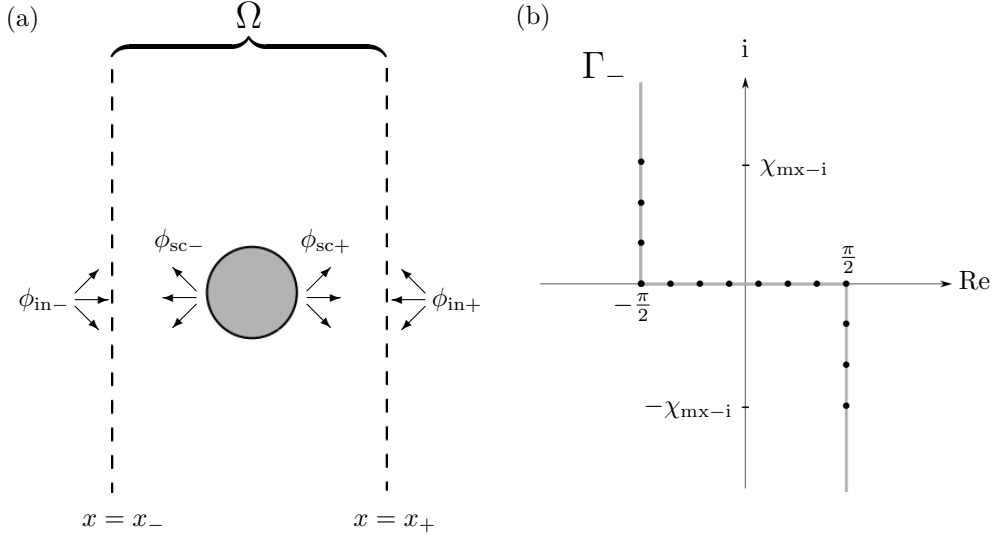


FIGURE 3. (a) Schematic of region Ω defined in Eqn. (2.1), and corresponding incident and scattered fields, as defined in Eqns. (2.2) and (2.7b), respectively. (b) Integration contour Γ_- (–) in the complex plane, as defined in Eqn. (2.3), and sampled points used for numerical approximation (\bullet , see §2.2).

based on the plane-wave integral representation of the wave field (e.g. Clemmow 1966), as opposed to Fourier–Bessel representations more familiar in array problems, and is adapted from the method outlined by Montiel *et al.* (2015, 2016) for wave propagation through large, finite arrays of scatterers/floating bodies. The key challenge is then to extract perturbed Rayleigh–Bloch wave numbers from the overall wave fields, and this is achieved by (i) using Rayleigh–Bloch waves rather than plane waves as forcing, and (ii) combining wave fields forced by Rayleigh–Bloch waves propagating in opposite directions for each individual realisation of the perturbed array. Perturbation strengths $\varepsilon = O(0.01)$ are shown to slightly decrease the Rayleigh–Bloch wave number, resulting in small phase shifts in the load profiles along the array and weakly damping the resonance. Perturbation strengths $\varepsilon = O(0.1)$ are shown to produce imaginary components in the Rayleigh–Bloch wave number, causing the Rayleigh–Bloch waves to attenuate along the array, shifting the maximum load to the front of the array and strongly damping the resonance.

2. Rayleigh–Bloch waves of unperturbed problem

2.1. Reflection and transmission kernels for a single cylinder

Consider the subregion of the horizontal plane

$$\Omega = \{(x, y) : x_- < x < x_+ \text{ and } y \in \mathbb{R}\}, \quad (2.1)$$

where the limits x_{\pm} are chosen so that it contains a single cylinder only. Fig. 3(a) shows a schematic of the subregion. The wave field incident on the cylinder in Ω , ϕ_{in} say, consists of the ambient incident wave and the scattered wave fields produced by all other cylinders in the array. Let the incident field be decomposed as $\phi_{in} = \phi_{in-} + \phi_{in+}$, where ϕ_{in-} represents the part of the wave field incident from the left-hand boundary of Ω ,

and $\phi_{\text{in}+}$ represents the part incident from the right-hand boundary, as illustrated in Fig. 3(a).

The incident fields are expressed in the plane-wave integral form

$$\phi_{\text{in}\pm} = \int_{\Gamma_{\pm}} A_{\pm}(\chi) \varphi(x, y : \chi) \, d\chi, \quad (2.2)$$

where the integration contours are defined by

$$\Gamma_{-} = \{-\pi/2 + i\gamma : \gamma \in \mathbb{R}_{+}\} \cup \{\gamma \in \mathbb{R} : -\pi/2 \leq \gamma \leq \pi/2\} \cup \{\pi/2 - i\gamma : \gamma \in \mathbb{R}_{+}\}, \quad (2.3)$$

as shown by the grey curve in Fig. 3(b), and $\Gamma_{+} = \Gamma_{-} + \pi$. On the real branches of Γ_{\pm} , φ defines plane waves propagating rightwards for Γ_{-} and leftwards for Γ_{+} . On the complex branches, it defines plane waves that decay rightwards for Γ_{-} and leftwards for Γ_{+} . Therefore, Eqn. (2.2) expresses the incident wave field $\phi_{\text{in}-}$ as a superposition of plane waves propagating/decaying rightwards, and $\phi_{\text{in}+}$ as a superposition of plane waves propagating/decaying leftwards, weighted by amplitude functions A_{\pm} , respectively.

The individual plane-wave components of the incident field, φ , have the Fourier–Bessel series representations

$$\varphi(x, y : \psi) = \sum_{m=-\infty}^{\infty} e^{im(\pi/2-\psi)} J_m(kr) e^{im\theta}, \quad (2.4)$$

where $r = \sqrt{(x-x_n)^2 + (y-y_n)^2}$ and $\theta = \arg\{(x-x_n) + i(y-y_n)\}$ are, respectively, the radial and azimuthal coordinates associated to cylinder n , and J_m is the Bessel function of order m . The scattered wave field produced by this incident component is

$$\varphi_{\text{sc}}(x, y : \psi) = \sum_{m=-\infty}^{\infty} Z_m e^{im(\pi/2-\psi)} H_m(kr) e^{im\theta}, \quad (2.5)$$

where H_m is the first-kind Hankel function of order m and $Z_m = -J'_m(ka)/H'_m(ka)$ (e.g. Martin 2006). It has the plane-wave integral representation

$$\varphi_{\text{sc}}(x, y : \psi) = \frac{1}{\pi} \sum_{m=-\infty}^{\infty} Z_m \int_{\Gamma_{\mp}} e^{im(\chi-\psi)} \varphi(x, z : \chi) \, d\chi \quad (2.6)$$

for $\pm(x-x_n) \geq 0$ and $r > a$, derived using the Sommerfeld integral representation for Hankel functions (Sommerfeld 1949, §19).

For the full incident wave field, ϕ_{in} , defined by Eqn. (2.2), the scattered wave field is

$$\phi_{\text{sc}}(x, y) = \int_{\Gamma_{-}} A_{-}(\psi) \varphi_{\text{sc}}(x, y : \psi) \, d\psi + \int_{\Gamma_{+}} A_{+}(\psi) \varphi_{\text{sc}}(x, y : \psi) \, d\psi, \quad (2.7a)$$

$$= \int_{\Gamma_{\mp}} \tilde{B}_{\pm}(\chi) \varphi(x, y : \chi) \, d\chi \equiv \phi_{\text{sc}\pm}(x, y) \quad (2.7b)$$

for $\pm(x-x_n) \geq 0$ and $r > a$, where

$$\tilde{B}_{\pm}(\chi) = \frac{1}{\pi} \sum_{m=-\infty}^{\infty} Z_m \left\{ \int_{\Gamma_{-}} e^{im(\chi-\psi)} A_{-}(\psi) \, d\psi + \int_{\Gamma_{+}} e^{im(\chi-\psi)} A_{+}(\psi) \, d\psi \right\} \quad (2.8)$$

for $\chi \in \Gamma_{\mp}$, are scattered amplitude functions. Eqn. (2.7b) expresses the scattered field as a superposition of waves propagating/decaying leftwards on the left-hand side of the cylinder, and propagating/decaying rightwards on its right-hand side, as shown in Fig. 3(a).

The total wave field, ϕ , is decomposed into fields propagating/decaying rightwards and leftwards on the left- and right-hand sides of the source via the integral representations

$$\phi(x, y) = \int_{\Gamma_{\pm}} A_{\pm}(\chi) \varphi(x, y : \chi) \, d\chi + \int_{\Gamma_{\mp}} B_{\pm}(\chi) \varphi(x, y : \chi) \, d\chi \quad (2.9)$$

for $\pm(x - x_n) \geq 0$ and $r > a$, where $B_{\pm} = A_{\mp} + \tilde{B}_{\pm}$ represent outgoing amplitude functions. The A_{\pm} are, accordingly, referred to as incoming amplitude functions. The outgoing amplitude functions are expressed in terms of the incoming amplitude functions using the scattering relations

$$B_{-}(\chi) = \int_{\Gamma_{-}} R(\chi : \psi) A_{-}(\psi) \, d\psi + \int_{\Gamma_{+}} T(\chi : \psi) A_{+}(\psi) \, d\psi \quad (2.10a)$$

$$\text{and } B_{+}(\chi) = \int_{\Gamma_{-}} T(\chi : \psi) A_{-}(\psi) \, d\psi + \int_{\Gamma_{+}} R(\chi : \psi) A_{+}(\psi) \, d\psi. \quad (2.10b)$$

Here, R and T are, respectively, reflection and transmission kernels, which are defined by

$$R(\chi : \psi) = \frac{1}{\pi} \sum_{m=-\infty}^{\infty} Z_m e^{im(\chi-\psi)} \quad \text{and} \quad T(\chi : \psi) = \delta(\chi - \psi) + R(\chi : \psi). \quad (2.11)$$

They determine the outgoing amplitude response in direction χ due to an incoming amplitude forcing in direction ψ .

In order to calculate wave interactions between adjacent subregions, it is convenient to normalise the wave phases to the left- or right-hand side of the region, using the phase-shifted amplitude functions

$$\hat{A}_{\pm}(\chi) = e^{ikx_{\pm} \cos(\chi)} A_{\pm}(\chi) \quad \text{and} \quad \hat{B}_{\pm}(\chi) = e^{ikx_{\pm} \cos(\chi)} B_{\pm}(\chi), \quad (2.12)$$

so that the potential can be expressed as

$$\phi(x, y) = \int_{\Gamma_{\pm}} \hat{A}_{\pm}(\chi) \hat{\varphi}_{\pm}(x, y : \chi) \, d\chi + \int_{\Gamma_{\mp}} \hat{B}_{\pm}(\chi) \hat{\varphi}_{\pm}(x, y : \chi) \, d\chi \quad (2.13)$$

for $\pm(x - x_n) > 0$ and $r > a$, where $\hat{\varphi}_{\pm} = e^{ik\{(x-x_{\pm}) \cos \psi + y \sin \psi\}}$. The phase-shifted amplitude functions satisfy scattering relations analogous to Eqns. (2.10a–b), but with reflection and transmission kernels, respectively,

$$\hat{R}_{\pm}(\chi : \psi) = e^{ikx_{\pm}(\cos \chi - \cos \psi)} R(\chi : \psi) \quad (2.14a)$$

$$\text{and } \hat{T}_{\pm}(\chi : \psi) = e^{ik(x_{\mp} \cos \chi - x_{\pm} \cos \psi)} T(\chi : \psi). \quad (2.14b)$$

2.2. Numerical approximation

Following Montiel *et al.* (2015, 2016), for numerical calculations the complex branches of the contour Γ_{-} (and, hence, Γ_{+}) are truncated, with the magnitude of the imaginary parts restricted to being less than or equal to a prescribed value $\chi_{\text{mx}-i} \in \mathbb{R}_{+}$. Further, the truncated contours are sampled, with the real branch sampled at J_r regular points, and the complex branches sampled at $J_i + 1$ regular points. The sampled points at the ends of the real branch overlap with the sampled points at the real-valued ends of the complex branches, so that the composite contours Γ_{\pm} each contain $2J_i + J_r$ sampled points. The black bullets on Fig. 3(b) are an example of the truncated and sampled version of the

contour Γ_- . The infinite series stemming from the Fourier–Bessel representations are also truncated, with the truncation limits denoted $\pm M$. Results presented in §3 and §4 use the truncations $M = 5$ and $\chi_{\text{mx}-i} = 2$, and discretisations $J_r = J_i = 100$, which were found to provide sufficient accuracy, noting Montiel *et al.* (2016) present relevant convergence analysis for a related problem.

The numerical approximations convert the operator form of the scattering relations satisfied by the phase-shifted amplitude functions to the array relations

$$\hat{\mathbf{b}}_- = \hat{\mathbf{R}}_- \hat{\mathbf{a}}_- + \hat{\mathbf{T}}_+ \hat{\mathbf{a}}_+ \quad \text{and} \quad \hat{\mathbf{b}}_+ = \hat{\mathbf{T}}_- \hat{\mathbf{a}}_- + \hat{\mathbf{R}}_+ \hat{\mathbf{a}}_+, \quad (2.15)$$

where the amplitude vectors $\hat{\mathbf{a}}_{\pm}$ and $\hat{\mathbf{b}}_{\pm}$ have entries

$$\{\hat{\mathbf{a}}_{\pm}\}_j = \hat{A}_{\pm}(\chi_j) \quad \text{and} \quad \{\hat{\mathbf{b}}_{\pm}\}_j = \hat{B}_{\pm}(\chi_j) \quad (2.16)$$

for $j = 1, \dots, 2J_i + J_r$, and the matrices $\hat{\mathbf{R}}_{\pm}$ and $\hat{\mathbf{T}}_{\pm}$ have entries

$$\{\hat{\mathbf{R}}_{\pm}\}_{i,j} = w_i \hat{R}_{\pm}(\chi_j : \chi_i) \quad \text{and} \quad \{\hat{\mathbf{T}}_{\pm}\}_{i,j} = w_i \hat{T}_{\pm}(\chi_j : \chi_i) \quad (2.17)$$

for $i, j = 1, \dots, 2J_i + J_r$. The matrices combine the reflection/transmission kernels and numerical integration, where w_i ($i = 1, \dots, 2J_i + J_r$) denote the quadrature weights — a composite trapezoidal rule is used for calculations, as in Montiel *et al.* (2015, 2016).

2.3. Spectrum for an infinite array of cylinders

Let the transfer matrix, \mathbf{P} , which maps the amplitude functions on the left-hand side of subregion Ω to the amplitude functions on the right-hand side, be defined by

$$\begin{pmatrix} \hat{\mathbf{b}}_+ \\ \hat{\mathbf{a}}_+ \end{pmatrix} = \mathbf{P} \begin{pmatrix} \hat{\mathbf{a}}_- \\ \hat{\mathbf{b}}_- \end{pmatrix} \quad \text{and} \quad \mathbf{P} = \begin{pmatrix} \hat{\mathbf{T}}_- - \hat{\mathbf{R}}_+ \hat{\mathbf{T}}_+^{-1} \hat{\mathbf{R}}_- & \hat{\mathbf{R}}_+ \hat{\mathbf{T}}_+^{-1} \\ \hat{\mathbf{T}}_+^{-1} \hat{\mathbf{R}}_- & \hat{\mathbf{T}}_+^{-1} \end{pmatrix}. \quad (2.18)$$

Centring the subregion around the cylinder it contains and setting its width to be d , i.e. $x_{\pm} = x_n \pm d/2$ are the midpoints between the cylinder in Ω and the adjacent cylinders, the spectrum of the transfer matrix determines the modes supported by the unperturbed array. Fig. 4(a) shows an example of the eigenvalues $\lambda = \lambda_i$ ($i = 1, \dots, 4J_i + 2J_r$) of the transfer matrix in the complex plane. The example problem considered is the resonant case Maniar & Newman (1997) identified for $N = 100$ cylinders, at frequency $kd = 2.78142$ ($kd/\pi \approx 0.88535$). The eigenvalues appear in reciprocal pairs, i.e. for $|\lambda| = 1$ if $\exp\{i \arg(\lambda)\}$ is an eigenvalue then so is $\exp\{-i \arg(\lambda)\}$, and for $\arg(\lambda) = 0$ if $|\lambda|$ is an eigenvalue then so is $1/|\lambda|$. Repeated eigenvalues relate to symmetric and antisymmetric eigenfunctions with respect to χ .

The eigenvalues forming the backwards \mathbb{C} -shape on the unit circle are the discrete approximation of the continuous spectrum, corresponding to solutions in which wave energy propagates to the far field. In the infinite-array setting, these are solutions forced by a plane ambient incident wave. The angle of the ambient incident wave with respect to the x -axis, ψ_{am} , is related to the argument of the eigenvalue via $\arg(\lambda) = kd \cos(\psi_{\text{am}})$. Therefore, the eigenvalues at $\lambda = 1$ correspond to incident waves normal to the array, propagating parallel to the y -axis, and the eigenvalues at the tips of the backwards \mathbb{C} -shape correspond to forcing at grazing incidence, i.e. parallel to the x -axis. The eigenvalue at the upper tip, which is labelled $\exp(ikd)$, propagates rightwards, and the eigenvalue at the lower tip, $\exp(-ikd)$ (unlabelled), propagates leftwards.

The subset of eigenvalues on the positive real axis form the discrete approximation to the continuous spectrum, generalised to forcing waves that decay exponentially. Eigenvalues smaller than unity decay rightwards, and eigenvalues greater than unity decay leftwards. The set of eigenvalues greater than unity extends beyond the figure limits.

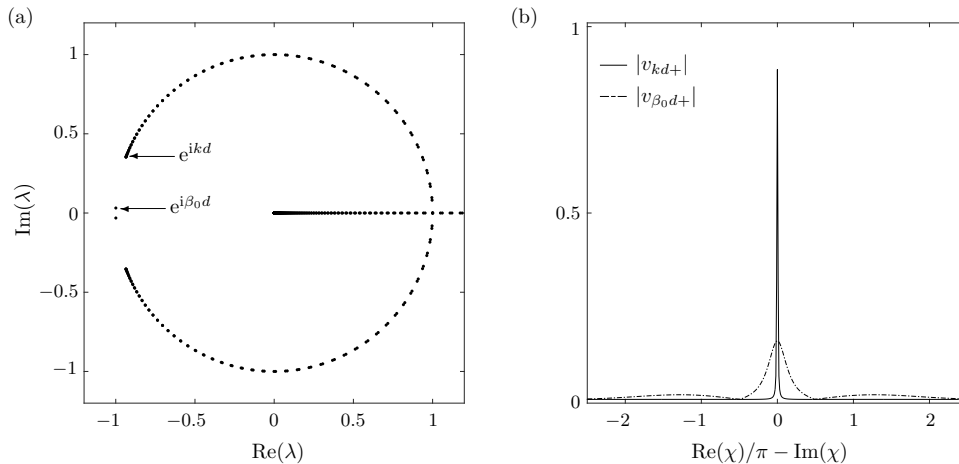


FIGURE 4. Spectrum of transfer matrix \mathbf{P} , defined in Eqn. (2.18), for $a/d = 0.25$ at the resonant frequency for the 100-cylinder array, $kd/\pi \approx 0.88535$. (a) Eigenvalues λ in the complex plane, with eigenvalues supporting head-on incidence in the positive x -direction, $\exp(ikd)$, and the Rayleigh–Bloch mode propagating in the positive x -direction, $\exp(i\beta_0d)$, indicated. (b) The moduli of the corresponding eigenfunctions associated to rightward propagating/decaying motions, v_{kd+} and v_{β_0d+} , respectively, as functions of the spectral parameter χ .

The pair of eigenvalues on the unit circle closest to negative unity correspond to Rayleigh–Bloch wave modes. These eigenvalues are denoted $\exp(\pm i\beta_0d)$, where $\beta_0 \in \mathbb{R}_+$ is the Rayleigh–Bloch wave number. They form the discrete spectrum, i.e. they correspond to solutions for which wave energy decays with distance away from the array. The eigenvalue in the upper half of the complex plane, which is labelled $\exp(i\beta_0d)$, relates to the mode that propagates rightwards along the array, and the eigenvalue in the lower half of the complex plane, $\exp(-i\beta_0d)$ (unlabelled), to the mode that propagates leftwards. As these eigenvalues are separated from the \mathbb{C} -shape $\beta_0 > k$, confirming that the Rayleigh–Bloch waves are shorter than the waves in the surrounding open water.

The definitions of continuous and discrete spectra used here are in terms of quasi-periodicities of possible solutions for a given frequency. This differs from, for example, Porter & Evans (1999), who define the spectra in terms of frequencies at which solutions exist for a given quasi-periodicity. In simple terms, the spectral parameter used here relates to the directional spectrum, whereas in Porter & Evans (1999) and others it relates to the frequency spectrum.

Fig. 4(b) shows the moduli of the rightward-propagating/decaying components of the eigenfunctions, $v_{kd+}(\chi)$ and $v_{\beta_0d+}(\chi)$, associated to the labelled eigenvalues $\exp(ikd)$ and $\exp(i\beta_0d)$, respectively. The eigenfunctions are approximated using the eigenvectors associated to the eigenvalues, and are normalised so that their L_2 -norm is unity. The eigenfunction v_{kd} displays a sharp spike at $\chi = 0$. This is an approximation of a Dirac delta function, corresponding to the plane ambient incident wave in the infinite-array problem. In contrast, the eigenfunction v_{β_0d} is smooth, indicating that it is an unforced solution of the infinite-array problem. Its dominant energy is spread around $\chi = 0$, and it has sidebands extending onto the complex branches ($|\operatorname{Re}(\chi)/\pi - \operatorname{Im}(\chi)| > 1$).

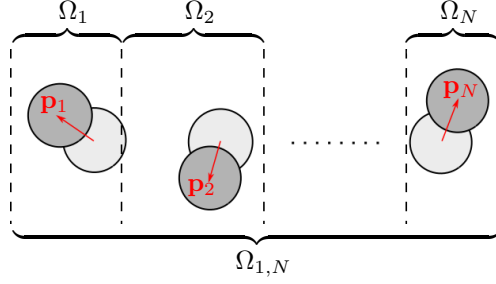


FIGURE 5. Schematic plan view of the perturbed geometry.

3. Damping of resonant loads

3.1. Solution method for finite, perturbed arrays

Positional disorder is introduced into the problem via random perturbations in the locations of the cylinders. The perturbed locations of the cylinder centres are denoted

$$(x_n, y_n) = (x_1 + (n-1)d, 0) + \mathbf{p}_n \quad \text{for } n = 1, \dots, N. \quad (3.1)$$

A parameter ε is used to control the perturbation strength, with the perturbation vectors expressed as

$$\mathbf{p}_n = \varepsilon d(\mu_n, \nu_n) \quad \text{for } n = 1, \dots, N, \quad (3.2)$$

where μ_n and ν_n are randomly selected from uniform distributions over the interval $[-0.5, 0.5]$. The perturbation strength is bounded by $\varepsilon < 1 - 2a/d$ so that cylinders cannot overlap. Fig. 5 shows a schematic of the perturbed geometry.

A contiguous sequence of subregions Ω_n ($n = 1, \dots, N$) are chosen, as shown in Fig. 5, with each subregion containing the cylinder of the corresponding index. (As indicated in Fig. 5, it's unnecessary for the subregions to contain the corresponding unperturbed cylinders.) The sampled amplitude functions and reflection/transmission matrices associated with subregion Ω_n are assigned superscripts (n) , with the reflection/transmission matrices calculated using the method outlined in §§2.1–2.2.

For $1 \leq p \leq q \leq N$, $\Omega_{p,q}$ denotes the region contained between the left-hand boundary of Ω_p and the right-hand boundary of Ω_q , with Fig. 5 showing $\Omega_{1,N}$. Let $\hat{\mathbf{R}}_{\pm}^{(p,q)}$ and $\hat{\mathbf{T}}_{\pm}^{(p,q)}$ denote the reflection and transmission matrices for this region, i.e.

$$\hat{\mathbf{b}}_{-}^{(p)} = \hat{\mathbf{R}}_{-}^{(p,q)} \hat{\mathbf{a}}_{-}^{(p)} + \hat{\mathbf{T}}_{+}^{(p,q)} \hat{\mathbf{a}}_{+}^{(q)} \quad \text{and} \quad \hat{\mathbf{b}}_{+}^{(q)} = \hat{\mathbf{T}}_{-}^{(p,q)} \hat{\mathbf{a}}_{-}^{(p)} + \hat{\mathbf{R}}_{+}^{(p,q)} \hat{\mathbf{a}}_{+}^{(q)}. \quad (3.3)$$

The reflection and transmission matrices for $\Omega_{p,q}$ with Ω_{q+1} appended to its right-hand side, $\hat{\mathbf{R}}_{\pm}^{(p,q+1)}$ and $\hat{\mathbf{T}}_{\pm}^{(p,q+1)}$, can be calculated from $\hat{\mathbf{R}}_{\pm}^{(p,q)}$, $\hat{\mathbf{T}}_{\pm}^{(p,q)}$, $\hat{\mathbf{R}}_{\pm}^{(q+1)}$ and $\hat{\mathbf{T}}_{\pm}^{(q+1)}$ via

$$\mathbf{R}_{-}^{(p,q+1)} = \mathbf{R}_{-}^{(p,q)} + \mathbf{T}_{+}^{(p,q)} \left(\mathbf{I} - \mathbf{R}_{-}^{(q+1)} \mathbf{R}_{+}^{(p,q)} \right)^{-1} \mathbf{R}_{-}^{(q+1)} \mathbf{T}_{-}^{(p,q)}, \quad (3.4a)$$

$$\mathbf{T}_{+}^{(p,q+1)} = \mathbf{T}_{+}^{(p,q)} \left(\mathbf{I} - \mathbf{R}_{-}^{(q+1)} \mathbf{R}_{+}^{(p,q)} \right)^{-1} \mathbf{T}_{+}^{(q+1)} \quad (3.4b)$$

$$\mathbf{R}_{+}^{(p,q+1)} = \mathbf{R}_{+}^{(q+1)} + \mathbf{T}_{-}^{(q+1)} \left(\mathbf{I} - \mathbf{R}_{+}^{(p,q)} \mathbf{R}_{-}^{(q+1)} \right)^{-1} \mathbf{R}_{+}^{(p,q)} \mathbf{T}_{+}^{(q+1)}, \quad (3.4c)$$

$$\text{and} \quad \mathbf{T}_{-}^{(p,q+1)} = \mathbf{T}_{-}^{(q+1)} \left(\mathbf{I} - \mathbf{R}_{+}^{(p,q)} \mathbf{R}_{-}^{(q+1)} \right)^{-1} \mathbf{T}_{-}^{(p,q)}, \quad (3.4d)$$

where \mathbf{I} is the identity matrix of dimension $2J_i + J_r$. These relations are derived from

the scattering relations for an individual region (2.15), on the basis that (i) the outgoing wave field on the right-hand side of cylinder q is the incoming field on the left-hand side of cylinder $q + 1$, and (ii) the outgoing field on the left-hand side of cylinder $q + 1$ is the incoming field on the right-hand side of cylinder q , i.e.

$$\hat{\mathbf{a}}_-^{(q+1)} = \hat{\mathbf{b}}_+^{(q)} \quad \text{and} \quad \hat{\mathbf{a}}_+^{(q)} = \hat{\mathbf{b}}_-^{(q+1)}. \quad (3.5)$$

Versions of relations (3.4) have been used by Botten *et al.* (2004), Peter & Meylan (2009) and Bennetts (2011), among others, for electromagnetic, water wave and acoustic problems, respectively.

The reflection and transmission matrices $\hat{\mathbf{R}}_{\pm}^{(1,n)}$ and $\hat{\mathbf{T}}_{\pm}^{(1,n)}$ for $n = 1, \dots, N$ are obtained by beginning with the leftmost region, Ω_1 , recursively appending the next region to the right and applying Eqns. (3.4). The process is initialised with the identities

$$\hat{\mathbf{R}}_{\pm}^{(1,1)} = \hat{\mathbf{R}}_{\pm}^{(1)} \quad \text{and} \quad \hat{\mathbf{T}}_{\pm}^{(1,1)} = \hat{\mathbf{T}}_{\pm}^{(1)}. \quad (3.6)$$

Similarly, the reflection and transmission matrices $\hat{\mathbf{R}}_{\pm}^{(n,N)}$ and $\hat{\mathbf{T}}_{\pm}^{(n,N)}$ for $n = 1, \dots, N$ are obtained by beginning at the rightmost region, Ω_N , then recursively appending the next region to the left and applying similar equations to (3.4) for region $\Omega_{p,q}$ with Ω_{p-1} appended to its left-hand side.

The sampled amplitude functions throughout the array are obtained from the reflection and transmission matrices via

$$\hat{\mathbf{b}}_+^{(n)} = \left(\mathbf{I} - \hat{\mathbf{R}}_+^{(1,n)} \hat{\mathbf{R}}_-^{(n+1,N)} \right)^{-1} \left(\hat{\mathbf{T}}_-^{(1,n)} \hat{\mathbf{a}}_-^{(1)} + \hat{\mathbf{R}}_+^{(1,n)} \hat{\mathbf{T}}_+^{(n+1,N)} \hat{\mathbf{a}}_+^{(N)} \right) \quad (3.7a)$$

and

$$\hat{\mathbf{a}}_+^{(n)} = \left(\mathbf{I} - \hat{\mathbf{R}}_-^{(n+1,N)} \hat{\mathbf{R}}_+^{(1,n)} \right)^{-1} \left(\hat{\mathbf{R}}_-^{(n+1,N)} \hat{\mathbf{T}}_-^{(1,n)} \hat{\mathbf{a}}_-^{(1)} + \hat{\mathbf{T}}_+^{(n+1,N)} \hat{\mathbf{a}}_+^{(N)} \right) \quad (3.7b)$$

for $n = 1, \dots, N$. The vectors $\hat{\mathbf{a}}_-^{(1)}$ and $\hat{\mathbf{a}}_+^{(N)}$ are, respectively, the sampled directional spectra for the prescribed rightward and leftward propagating/decaying components of the ambient incident wave field, $\hat{A}_{\text{am}-} = \hat{A}_-^{(1)}$ and $\hat{A}_{\text{am}+} = \hat{A}_+^{(N)}$, defined via

$$\phi_{\text{am}} = \int_{\Gamma_-} \hat{A}_{\text{am}-}(\chi) \hat{\varphi}_-^{(1)}(x, y : \chi) \, d\chi + \int_{\Gamma_+} \hat{A}_{\text{am}+}(\chi) \hat{\varphi}_+^{(N)}(x, y : \chi) \, d\chi, \quad (3.8)$$

where $\hat{\varphi}_-^{(1)}$ and $\hat{\varphi}_+^{(N)}$ are the phase-shifted plane-wave potentials defined below Eqn. (2.13) for subregions Ω_1 and Ω_N , respectively. Bennetts & Squire (2009) originally presented equivalent expressions to (3.7) for a problem involving multiple rows of floating bodies. Their expressions contained typographical errors, which are corrected above. Calculation of the amplitude functions completes the solution process.

3.2. Numerical results

To simplify the analysis, the ambient incident wave field is set to be the rightward-propagating Rayleigh–Bloch mode, i.e. $\hat{A}_{\text{am}-} = v_{\beta_0 d+}$ and $\hat{A}_{\text{am}+} = 0$. Fig. 6(a) shows the maximum (normalised) load on a 100-cylinder array, as a function of frequency, kd/π , for different perturbation strengths, ε . It is equivalent to Fig. 2 for the Rayleigh–Bloch incident wave rather than the plane incident wave, with the frequency range truncated due to the cut-off at $kd/\pi \approx 0.88574$. For frequencies immediately beyond the cut-off, the Rayleigh–Bloch wave numbers become complex and the Rayleigh–Bloch wave decays along the array (as identified by Thompson *et al.* 2008).

For the unperturbed problem, the Rayleigh–Bloch incident wave excites a resonance

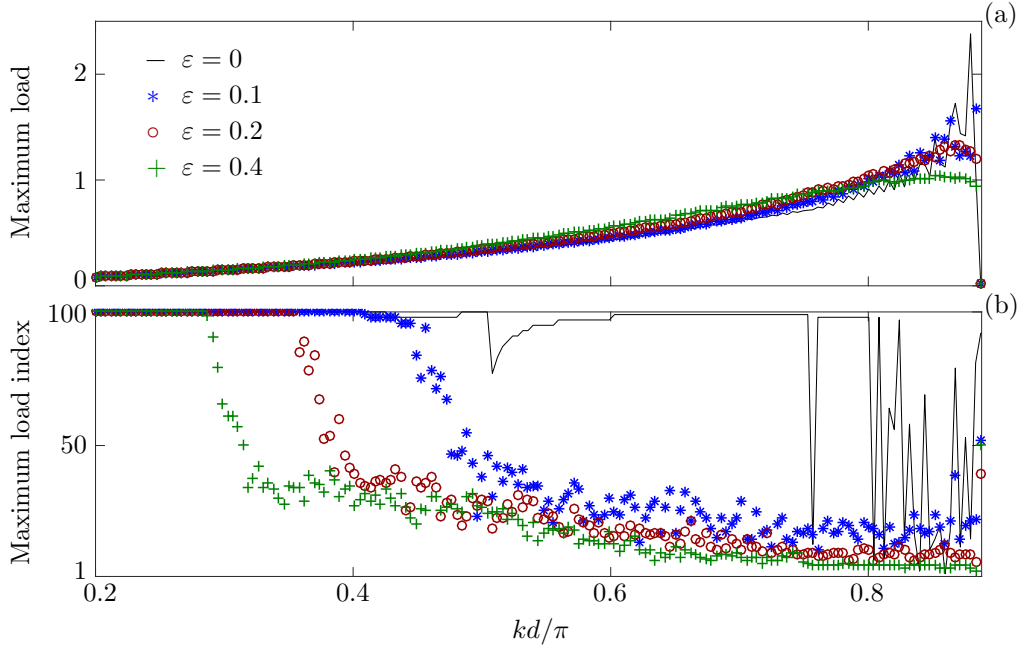


FIGURE 6. (a) As in Fig. 2 but for a Rayleigh–Bloch ambient incident wave. (b) Corresponding indices of the cylinders experiencing the maximum loads.

at the same frequency as the plane incident wave, $kd/\pi \approx 0.88535$, preceded by a series of maxima and minima. This is expected, as these features are caused by interactions between rightward- and leftward-propagating Rayleigh–Bloch waves (as explained in §1, cf. Thompson *et al.* 2008). Moreover, in an identical fashion to the plane-wave case, perturbations damp the resonance for the Rayleigh–Bloch incident wave field.

Fig. 6(b) shows the index of the cylinder at which the maximum load is attained, as a function of frequency and for the different perturbation strengths. For low frequencies, the maximum is attained at the farthest cylinder from the source of the incident wave field (the right-hand end of the array, $n = 100$), due to cylinders refracting the rightward-propagating incident wave energy in towards the array (Maniar & Newman 1997). This low-frequency behaviour is consistent for the different perturbation strengths, as the perturbations are small in comparison to the wavelength, $2\pi/k$, in this regime. For the unperturbed array, the maximum load is attained at the right-hand end of the array up to $kd/\pi \approx 0.4$ – 0.5 . As the frequency increases beyond this limit, the location of the maximum begins to jump around erratically, as it moves between different local maxima of comparable magnitudes along the array. For the perturbed arrays, the maximum load departs the right-hand end of the array for lower frequencies than the unperturbed array, with the departure frequency decreasing as the perturbation strength increases. The location of the maximum then transitions relatively smoothly towards the front cylinder (left-hand end of the array, $n = 1$), as frequency increases.

Fig. 7 shows example profiles of the loads on the array at the resonant frequency $kd/\pi \approx 0.88535$. It shows the profile for the unperturbed array and for two random realisations of the perturbed array, for perturbation strengths $\varepsilon = 0.01$ and 0.2 . The profile for the unperturbed array is qualitatively identical to that presented by Maniar & Newman (1997) for a plane incident wave — it is an approximately symmetric hump,

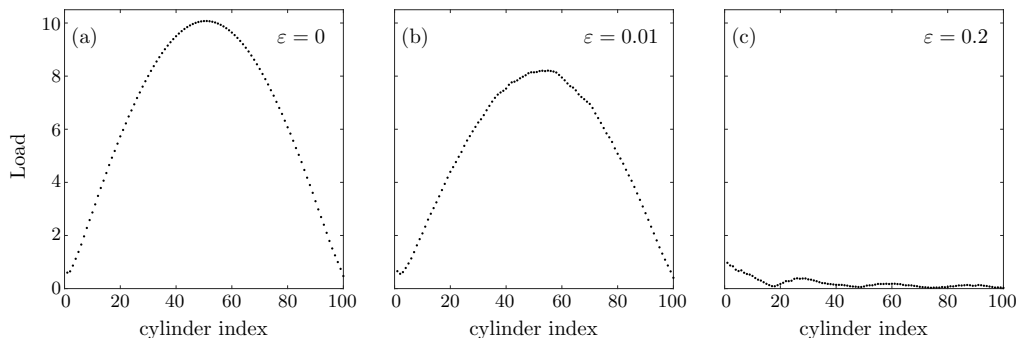


FIGURE 7. Example realisations of load profiles on 100-cylinder arrays for $a/d = 0.25$, $kd/\pi \approx 0.88535$, and (a) no perturbation, (b) perturbation strength $\varepsilon = 0.01$, and (c) $\varepsilon = 0.2$.

with the maximum load attained at the centre ($n = 51$), due to coherence between strongly excited rightward- and leftward-propagating Rayleigh–Bloch modes (Thompson *et al.* 2008). The weak perturbation ($\varepsilon = 0.01$) preserves the near symmetry but slightly shortens the length of the resonant hump and damps the maximum load. The strong perturbation ($\varepsilon = 0.2$) fundamentally changes the qualitative properties of the profile, eliminating symmetry and resonance altogether. The profile attenuates from the front of the array to the rear, with accompanying oscillations, indicating a localised state has been reached.

4. Localisation of Rayleigh–Bloch waves

4.1. Perturbed Rayleigh–Bloch wave number calculation

For the unperturbed array forced by a Rayleigh–Bloch ambient incident wave, the wave field along the array is dominated by rightward- and leftward-propagating Rayleigh–Bloch modes. For a perturbed array, it is hypothesised that, similarly, the wave field is dominated by perturbed Rayleigh–Bloch modes, with complex-valued wave number $\beta_+(\varepsilon) \in \mathbb{R}_+ + i\mathbb{R}_+$ for the rightward-propagating mode and $\beta_-(\varepsilon) \in \mathbb{R}_- + i\mathbb{R}_-$ for the leftward-propagating mode. It is expected that $\beta_- \approx -\beta_+$, on average at least, due to symmetry of the perturbations, and for the unperturbed array $\beta_\pm(0) = \pm\beta_0$. The change in the real parts of the wave numbers, with respect to the unperturbed Rayleigh–Bloch wave numbers, induces phase shifts in the modes, and the introduction of imaginary components produces attenuation of the modes, resulting in localisation for sufficiently large attenuation rates.

The perturbed wave numbers, β_\pm , are extracted from wave fields for the perturbed arrays, using a version of the approach proposed by Bennetts & Peter (2013). For each realisation of the perturbed array, the wave fields are calculated for

- (i) a rightward-propagating Rayleigh–Bloch incident wave ($\hat{A}_{\text{am}-} = v_{\beta_0 d+}$ and $\hat{A}_{\text{am}+} = 0$, as in §3),
- (ii) and a leftward-propagating Rayleigh–Bloch incident wave ($\hat{A}_{\text{am}-} = 0$ and $\hat{A}_{\text{am}+} = v_{-\beta_0 d-} = v_{\beta_0 d+}$).

The rightward- and leftward-propagating directional amplitude functions along the array for these wave fields are denoted

$$\xi_{\beta_\pm d}^{(n)} = \hat{B}_+^{(n-1)} = \hat{A}_-^{(n)} \quad \text{and} \quad \zeta_{\beta_\pm d}^{(n)} = \hat{A}_+^{(n-1)} = \hat{B}_-^{(n)} \quad (4.1)$$

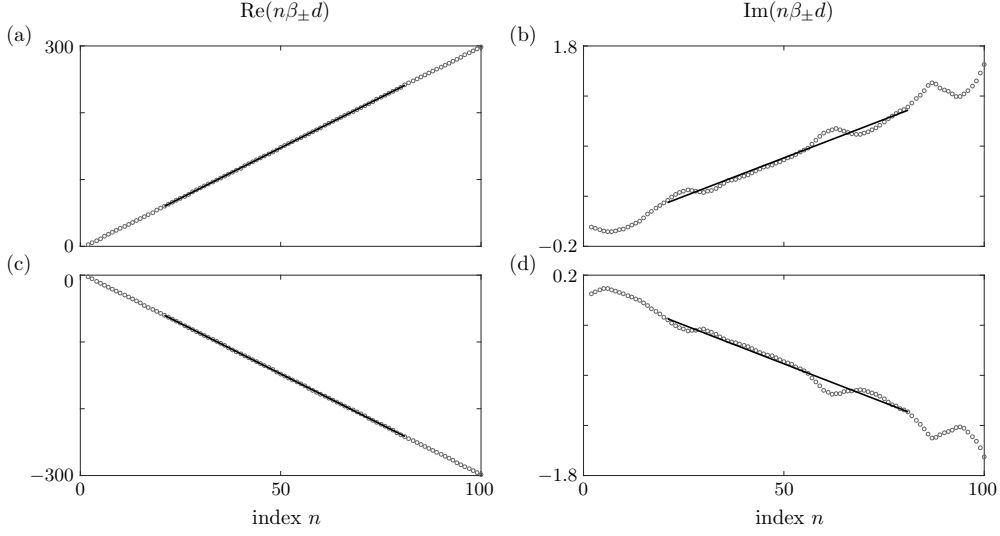


FIGURE 8. Eigenvalues of matrix $\mathbf{M}^{(n)}$, given in Eqn. (4.4), corresponding to rightward-propagating (top panels, a,b) and leftward-propagating (bottom panels, c,d) Rayleigh–Bloch modes for $a/d = 0.25$, $kd/\pi \approx 0.88535$ and $\varepsilon = 0.2$. Left-hand panels (a,c) show the real parts of the natural logarithms of the modes (phases) and the right-hand panels (b,d) show the imaginary parts (attenuation), with means of an ensemble of 500 simulations (\circ), overlaid by the straight-line fits ($-$) used to extract the Rayleigh–Bloch wave numbers.

for $n = 1, \dots, N+1$, respectively, where the undefined amplitude functions at the boundaries of the array are replaced by the equivalent functions of the ambient incident wave fields,

$$\hat{B}_+^{(0)} \equiv \hat{A}_{\text{am}-} \quad \text{and} \quad \hat{B}_-^{(N+1)} \equiv \hat{A}_{\text{am}+}. \quad (4.2)$$

The hypothesis that the wave fields are dominated by perturbed Rayleigh–Bloch modes is translated into the ansatzes

$$\xi_{\beta_{\pm}d}^{(n)} \approx a_{\pm}^{(\xi)} e^{i\beta_{\pm}dn} v_{\beta_{\pm}d+} + b_{\pm}^{(\xi)} e^{i\beta_{\pm}d(N+1-n)} v_{\beta_{\pm}d-} \quad (4.3a)$$

$$\text{and} \quad \zeta_{\beta_{\pm}d}^{(n)} \approx a_{\pm}^{(\zeta)} e^{i\beta_{\pm}dn} v_{\beta_{\pm}d-} + b_{\pm}^{(\zeta)} e^{i\beta_{\pm}d(N+1-n)} v_{\beta_{\pm}d+}, \quad (4.3b)$$

where $a_{\pm}^{(\bullet)}(\varepsilon)$ and $b_{\pm}^{(\bullet)}(\varepsilon)$ are coefficients/amplitudes, $v_{\beta_{\pm}d+}$ is the component of the eigenfunction associated to β_{\pm} that propagates/decays rightwards, and $v_{\beta_{\pm}d-}$ is the component propagating/decaying leftwards.

Ansatzes (4.3a–b) are combined, as in Bennetts & Peter (2013), to produce the expression

$$\text{eig}(\mathbf{M}^{(n)}) = \{e^{i\beta_{+}dn}, e^{i\beta_{-}dn}\} \quad \text{for} \quad n = 1, \dots, N, \quad (4.4a)$$

where

$$\mathbf{M}^{(n)} = \mathbf{M}^{(n, N+1)} \text{inv}(\mathbf{M}^{(1, N+1-n)}), \quad \mathbf{M}^{(p, q)} = \begin{pmatrix} \xi_{\beta_{+}d}^{(p)}(0) & \xi_{\beta_{-}d}^{(q)}(0) \\ \zeta_{\beta_{+}d}^{(p)}(0) & \zeta_{\beta_{-}d}^{(q)}(0) \end{pmatrix}, \quad (4.4b)$$

and $\text{eig}(\bullet)$ denotes the set of eigenvalues of the included matrix. The values of the amplitude functions corresponding to wave components propagating parallel to the x -axis only are used because the ansatzes essentially reduce the problem to a single dimension.

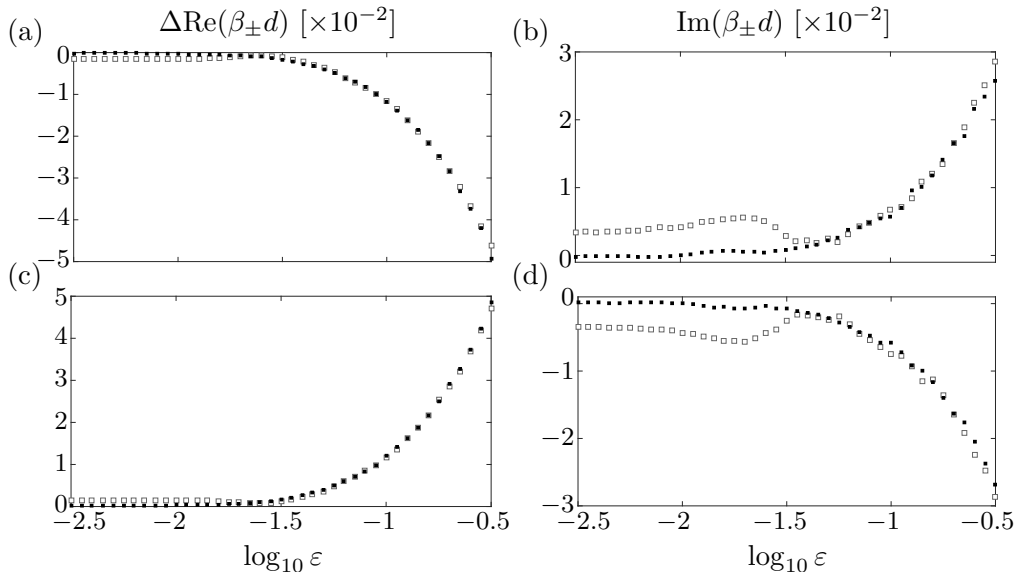


FIGURE 9. Left-hand panels (a,c) show phase changes of perturbed Rayleigh–Bloch wave numbers relative to the unperturbed wave numbers, as functions of disorder strength for $a/d = 0.25$ and $kd/\pi \approx 0.88535$. Right-hand panels (b,d) show the attenuation rates. Top panels (a,b) show results for the rightward-propagating/attenuating Rayleigh–Bloch mode, and the bottom panels (c,d) show the leftward-propagating/attenuating mode. Results are calculated using a 100-cylinder array (\square) and a 200-cylinder array (\blacksquare).

Fig. 8 shows an example of natural logarithms of eigenvalues of the matrix $\mathbf{M}^{(n)}$, as a function of cylinder index n , for a 100-cylinder array with perturbation strength $\varepsilon = 0.2$ at the resonant frequency for the unperturbed array, $kd/\pi \approx 0.88535$. The eigenvalues are separated into real and imaginary parts (left- and right-hand panels, respectively), and those corresponding to β_+ and β_- (top and bottom panels, respectively). The results are the means of ensembles of 500 randomly generated realisations of the perturbations.

The log-eigenvalue profiles are approximately linear — noise is visible in the imaginary parts but not in the real parts, which are dominated by the eigenvalues of the underlying unperturbed array. Straight-line fits are overlaid on the profiles, from which the non-dimensional Rayleigh–Bloch wave numbers, $\beta_{\pm}d$, are extracted as the slopes. The fits are made to the interior of the profiles only to avoid contamination by local effects of the array ends, just visible in the imaginary parts. The extracted Rayleigh–Bloch wave numbers display the expected symmetry (to three decimal places), with $\beta_+d \approx 3.02058 + 0.01536i$ and $\beta_-d \approx -3.02055 - 0.01548i$.

Extracting array wave numbers (in this case Rayleigh–Bloch wave numbers) from mean log-eigenvalue profiles is more stable than Bennetts & Peter (2013)’s method of extracting array wave numbers from log-eigenvalue profiles of individual realisations and then averaging. The Rayleigh–Bloch wave numbers are not those of the effective (mean) wave field, as the amplitudes and phases are separated prior to averaging.

4.2. Numerical results

Fig. 9 shows the extracted wave numbers as functions of perturbation strength for the resonant frequency, and using ensembles of 100 realisations for each perturbation strength. The real parts (phases) are shown as relative deviations from the Rayleigh–

Bloch wave numbers of the unperturbed array,

$$\Delta\text{Re}(\beta_{\pm}d) = \frac{\text{Re}(\beta_{\pm}d) \mp \beta_0d}{\beta_0d}, \quad (4.5)$$

in the left-hand panels, with the imaginary parts (attenuation rates) shown in the right-hand panels. Wave numbers supporting rightward-propagating/attenuating modes are shown in the top panels, with those for the leftward-propagating/attenuating modes in the bottom panels. Results are shown for 100- and 200-cylinder arrays.

The results again show the expected symmetry $\beta_- \approx -\beta_+$. The phase changes are similar for the 100- and 200-cylinder arrays, indicating that the real parts of the Rayleigh–Bloch wave numbers do not depend on array length (beyond $N = 100$, at least). Deviations between the phases for the two array lengths are evident for weak perturbations, approximately $\log_{10} \varepsilon < -1.5$ ($\varepsilon < 0.03162$), with the phase changes approximately zero in this regime for the 200-cylinder arrays, i.e. $\beta_{\pm}(\varepsilon) \approx \pm\beta_0$ for $\varepsilon \ll 1$ as expected, but being a small finite value for the 100-cylinder array. The errors for the 100-cylinder array are due to 100 cylinders not providing an interval long enough to average out the presence of oscillations caused by the circular wave fields generated at the array ends, which compromise the validity of ansatzes (4.3). Stronger perturbations, $\log_{10} \varepsilon > -1.5$, clearly reduce the modulus of the phase of the Rayleigh–Bloch wave numbers, with the reduction steadily increasing as the perturbation strength increases.

In the weak-perturbation regime, $\log_{10} \varepsilon < -1.5$, deviations between the two array lengths are exacerbated for the attenuation rates, as the attenuation is negligible so that the oscillations caused by the circular wave fields dominate the imaginary-component profiles. The 200-cylinder array provides attenuation rates that are approximately zero for very weak perturbations, approximately $\log_{10} \varepsilon < -2$ ($\varepsilon < 0.01$), as expected, whereas attenuation rates for the 100-cylinder array are visibly non-zero in this regime. For stronger perturbations, $\log_{10} \varepsilon > -1.5$, the moduli of the attenuations rates increase with increasing perturbation strength and the attenuation rates for the 100-cylinder array rapidly transition to agreement with those of the 200-cylinder array. This marks the regime in which attenuation dominates the profiles of the imaginary components of the eigenvalues of $\mathbf{M}^{(n)}$.

Fig. 10(a) shows the corresponding maximum load on the 200-cylinder array produced by a rightward-propagating Rayleigh–Bloch ambient incident wave field and the load on the front cylinder ($n = 1$), as functions of perturbation strength. The resonance in the maximum load for the unperturbed 200-cylinder array at $kd/\pi \approx 0.88535$ manifests as two symmetric humps in the load profile, where each hump is almost identical to that shown in Fig. 7(a) for the 100-cylinder array. (A stronger, single-hump resonance for the 200-cylinder array, analogous to that shown by Fig. 7(a) for the 100-cylinder array, is obtained at a slightly higher frequency.)

For weak perturbations, $\log_{10} \varepsilon < -1.5$, resonance in the maximum load is damped, as indicated in Fig. 7(b) for the 100-cylinder array, with the damping gradually increasing as the perturbation strength increases. Fig. 10(b) shows an individual load profile in the weak-perturbation regime, with $\log_{10} \varepsilon = -2$, for which $\beta_{\pm}d \approx \pm 3.109 \pm 0.000i$. The profile is similar to the two-hump resonant profile occurring for the unperturbed array at this frequency, but with the resonances damped and the hump lengths reduced. The load profile for the unperturbed array with frequency $kd/\pi \approx 0.88532$, for which $\beta_0d \approx 3.109$, is superimposed on the panel. It is almost identical to the profile for the perturbed array, indicating that a weakly-perturbed array acts like an unperturbed array with a slightly shortened cylinder spacing and/or to slightly shifted forcing. (A similar profile can be obtained at the resonant frequency by increasing the number of cylinders in the

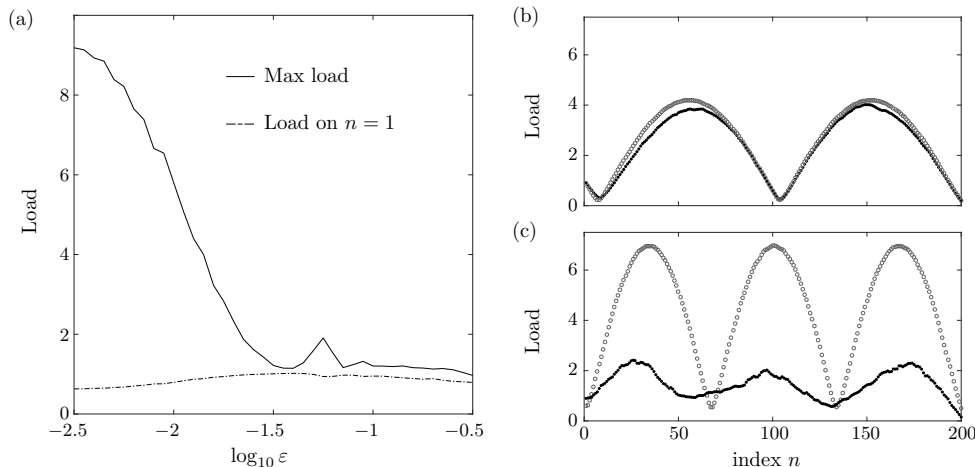


FIGURE 10. (a) Maximum load (—) and load on the first cylinder (---), caused by a rightward-propagating Rayleigh–Bloch ambient incident wave on a 200-cylinder array for $a/d = 0.25$ and $kd/\pi \approx 0.88535$, as functions of disorder. (b) A corresponding load-profile realisation for $\log_{10} \varepsilon = -2$ (\bullet), and the profile for the unperturbed problem with $kd/\pi \approx 0.88532$ (\circ). (c) As in (b) but for $\log_{10} \varepsilon = -1.25$ (\bullet), and $kd/\pi \approx 0.88487$ (\circ).

unperturbed array to $N = 204$. Alternatively, reducing the perturbed array to $N = 196$ cylinders produces a profile approximating the two-hump resonance for the unperturbed array with $N = 200$.)

For stronger perturbations, $\log_{10} \varepsilon > -1.5$, the maximum load is approximately equal to the load on the front cylinder, as the attenuation rates are, in general, sufficiently large to produce localised states, as shown in Fig. 7(c) for the 100-cylinder array. A weak resonance in the maximum load around $\log_{10} \varepsilon = -1.25$ ($\varepsilon \approx 0.05623$) causes it to deviate away from the load on the front cylinder. Fig. 10(c) shows an individual load profile for $\log_{10} \varepsilon = -1.25$, for which $\beta_{\pm} \approx \pm 3.094 \pm 0.003i$, with the load profile for the unperturbed array at frequency $kd/\pi \approx 0.88487$ superimposed, for which $\beta_0 \approx 3.094$. The profile for the unperturbed array is resonant, as indicated by the three humps and the symmetry of the profile, although it is a weaker resonance than the two-hump resonance at $kd/\pi \approx 0.88535$. The three humps are visible in the profile for the perturbed array, driving the resonance in the maximum load around $\log_{10} \varepsilon = -1.25$. However, attenuation produced by the imaginary component of the Rayleigh–Bloch wave number significantly reduces the hump peaks, so that the resonance is weak.

5. Summary and conclusions

A solution method has been presented for water-wave interactions with line arrays of rigid, bottom-mounted, surface-piercing cylinders, in which the wave field excited by an ambient incident wave is calculated recursively. The directional scattering kernels for a solitary cylinder, used in the method, identify the Rayleigh–Bloch modes responsible for causing resonant loads in the interior of the array. It was shown that Rayleigh–Bloch modes can be used as the ambient incident wave field to excite the resonant loads, considerably simplifying the analysis.

The method readily permits perturbations to be introduced into the array. It was shown that perturbations in the positions of the cylinders damp the resonant loads. Perturbation strengths $\varepsilon = O(0.01)$ (i.e. order 1% of the cylinder spacing) were shown to damp the resonance weakly. These perturbations produce small phase shifts in the load profiles

along the arrays, meaning the arrays respond in a similar fashion to an unperturbed array with slightly smaller cylinder spacings. Perturbation strengths $\varepsilon = O(0.1)$ strongly damp the resonance, resulting in the maximum load occurring close to the front of the array, with the loads generally diminishing with distance along the array.

The strong damping was associated to the localisation phenomenon. Perturbed Rayleigh–Bloch wave numbers were calculated for the perturbed arrays by combining wave fields excited by unperturbed Rayleigh–Bloch incident fields, for ensembles of randomly generated realisations of the perturbations. For perturbation strengths $\varepsilon = O(0.01)$, the perturbed Rayleigh–Bloch wave numbers remain approximately real, relating to the phase shifts in the load profiles, and the weak damping of resonances. Perturbation strengths $\varepsilon = O(0.1)$ produce imaginary components of appreciable magnitudes in the perturbed Rayleigh–Bloch wave numbers, attenuating the corresponding modes as they propagate along the arrays, so that the maximum load is attained close to the front of the array, and resulting in localisation if the attenuation rates are sufficiently large with respect to the array length.

It would be difficult to confirm the localisation predicted here experimentally, as it would have to be disentangled from the dissipative mechanisms inevitable in water-wave problems. For instance, the attenuation of the wave profile along the array found by Kagemoto *et al.* (2002), which they attributed to viscous dissipation, is, superficially, similar to attenuation signalling localisation. Although it is clearly not a localisation effect in this case (e.g. positional inaccuracies equivalent to perturbation strengths $\varepsilon < 0.006$ are reported), viscous dissipation would still play a role for stronger perturbations. Analogous issues are inherent in many other phenomena where localisation is predicted (see the discussion in Weaver 1990).

The Australian Research Council funds an early-career fellowship for LGB (DE130101571). The US Office of Naval Research funds a postdoctoral fellowship for FM (Award number N00014-131-0279). The University of Adelaide hosted MAP for a sabbatical, during which this work was accomplished. LGB and MAP acknowledge useful discussions with Richard Porter regarding Rayleigh–Bloch waves.

REFERENCES

- BENNETTS, L. G. 2011 Wave attenuation through multiple rows of scatterers with differing periodicities. *SIAM J. Appl. Maths.* **71** (2), 540–558.
- BENNETTS, L. G. & PETER, M. A. 2013 Spectral analysis of wave propagation through rows of scatterers via random sampling and a coherent potential approximation. *SIAM J. Appl. Math.* **73** (4), 1613–1633.
- BENNETTS, L. G. & SQUIRE, V. A. 2009 Wave scattering by multiple rows of circular ice floes. *J. Fluid Mech.* **639**, 213–238.
- BERRY, M V & KLEIN, S 1997 Transparent mirrors: rays, waves and localization. *Eur. J. Phys.* **18**, 222–228.
- BOTTEN, L. C., WHITE, T. P., ASATRYAN, A. A., LANGTRY, T. N., DE STERKE, C. M. & MCPHEDRAN, R. C. 2004 Bloch mode scattering matrix methods for modeling extended photonic crystal structures. I. Theory. *Phys. Rev. E* **70**, 056606.
- CALLAN, M., LINTON, C. M. & EVANS, D. V. 1991 Trapped modes in two-dimensional waveguides. *J. Fluid Mech.* **229**, 51–64.
- CLEMMOW, P. C. 1966 *The Plane Wave Spectrum Representation of Electromagnetic Fields*. IEEE Press.
- COLQUITT, D. J., CRASTER, R. V., ANTONAKAKIS, T. & GUENNEAU, S. 2015 Rayleigh–Bloch waves along elastic diffraction gratings. *Proc. R. Soc. A* **471**, 20140465.

- EVANS, D. V. & PORTER, R. 1997 Trapped modes about multiple cylinders in a channel. *J. Fluid Mech.* **339**, 331–356.
- EVANS, D. V. & PORTER, R. 1999 Trapping and near-trapping by arrays of cylinders in waves. *J. Eng. Maths.* pp. 149–179.
- HODGES, C. H. & WOODHOUSE, J. 1983 Vibration isolation from irregularity in a nearly periodic structure: Theory and measurements. *J. Acoust. Soc. Am.* **74** (3), 894–905.
- KAGEMOTO, H., MURAI, M., SAITO, M., MOLIN, B. & MALENICA, Š. 2002 Experimental and theoretical analysis of the wave decay along a long array of vertical cylinders. *J. Fluid Mech.* **456**, 113–135.
- LINTON, C. M. & MCIVER, M. 2002 The existence of Rayleigh–Bloch surface waves. *J. Fluid Mech.* **470** (1994), 1–5.
- LINTON, C. M. & MCIVER, P. 2001 *Mathematical techniques for wave/structure interactions*. Chapman & Hall/CRC.
- LINTON, C. M., PORTER, R. & THOMPSON, I. 2007 Scattering by a semi-infinite periodic array and the excitation of surface waves. *SIAM J. Appl. Math.* **67** (5), 1233–1258.
- MANIAR, H. D. & NEWMAN, J. N. 1997 Wave diffraction by a long array of cylinders. *J. Fluid Mech.* **339**, 309–330.
- MARTIN, P. A. 2006 *Multiple scattering: interaction of time-harmonic waves with N obstacles*. Cambridge University Press.
- MONTIEL, F., SQUIRE, V. A. & BENNETTS, L. G. 2015 Evolution of directional wave spectra through finite regular and randomly-perturbed arrays of scatterers. *SIAM J. Appl. Maths.* **75**, 630–651.
- MONTIEL, F., SQUIRE, V. A. & BENNETTS, L. G. 2016 Attenuation and directional spreading of ocean wave spectra in the marginal ice zone. *J. Fluid Mech.* **790**, 492–522.
- PETER, M. A. & MEYLAN, M. H. 2007 Water-wave scattering by a semi-infinite periodic array of arbitrary bodies. *J. Fluid Mech.* **575**, 473–494.
- PETER, M. A. & MEYLAN, M. H. 2009 Water-wave scattering by vast field of bodies. *SIAM J. Appl. Maths.* **70** (5), 1567–1586.
- PORTER, R. & EVANS, D. V. 1999 Rayleigh–Bloch surface waves along periodic gratings and their connection with trapped modes in waveguides. *J. Fluid Mech.* **386**, 233–258.
- SHENG, P. 2006 *Introduction to wave scattering, localisation and mesoscopic phenomena*, 2nd edn. Springer, Berlin.
- SOMMERFELD, A. 1949 *Partial differential equations in physics*, , vol. Vol. 1. Academic Press.
- THOMPSON, I., LINTON, C. M. & PORTER, R. 2008 A new approximation method for scattering by long finite arrays. *Q. J. Mech. Appl. Math.* **61**(3), 333–352.
- WEAVER, R. L. 1990 Anderson localization of ultrasound. *Wave Motion* **12** (2), 129–142.